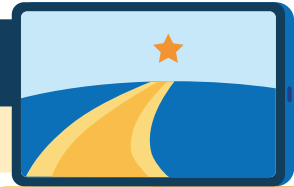




OREGON CIS

Account Creation Guide



1

Go to <https://oregoncis.uoregon.edu>.
Under “Have a guest account?” click on “Sign up here.”

2

Enter your agency/organization guest username and password and click “SUBMIT.”
This will tell the system what agency/organization your account should be placed in.

Guest Username:

Guest Password:

3

Fill out the form with your information and set your password, security questions, and language preference. Everything marked with asterisks ** is required. Be sure to enter your email address so you can use it if you forget your username and password. **Write your username and password below.**



Your Username:

Your Password:

4

Click “SUBMIT.” You will automatically be taken into your account. When you return to the site, you will log in with the username and password you created.



Your next step is to start your career and education planning and exploration today!

For more information, contact us:

CISService@uoregon.edu | 800.495.1266 | oregoncis.uoregon.edu



UNIVERSITY OF
OREGON

College of Education Oregon CIS is administered by the University of Oregon as a research and outreach unit in the College of Education.

Start Your Exploration Here

SKILLS – Occ Select

Select from skills in a job you liked to find similar occupations.

Get there: [Explore Resources](#) > [Occupations](#) > [SKILLS](#) > [Occ Select](#)

Interest Profiler

Rank statements to find occupations that you might be passionate about.

Get there: [Explore Resources](#) > [Occupations](#) > [Interest Profiler](#)

Work Importance Locator

Use statements about “On my ideal job it is important that...” to find occupations.

Get there: [Explore Resources](#) > [Occupations](#) > [Work Importance Locator](#)

Combined Report of Assessments

Use “Order by Count” to see the “cream rise to the top” from your assessment results.

Get there: [Dashboard](#) > [Reports](#) > [Combined Report of Assessments](#)

Top 3 Holland Codes from Assessments

Top 3 Favored Occupations

Pro Tip

Reality Check

Check that you’ll be able to earn enough to afford your lifestyle.

Get there: [Explore Resources](#) > [Occupations](#) > [Reality Check](#)

Career Bio

Track your education and employment history to create your primary résumés.

Get there: [Explore Resources](#) > [Employment](#) > [Career Bio](#)

For more information, contact us:

CISService@uoregon.edu | [800.495.1266](tel:800.495.1266) | oregoncis.uoregon.edu